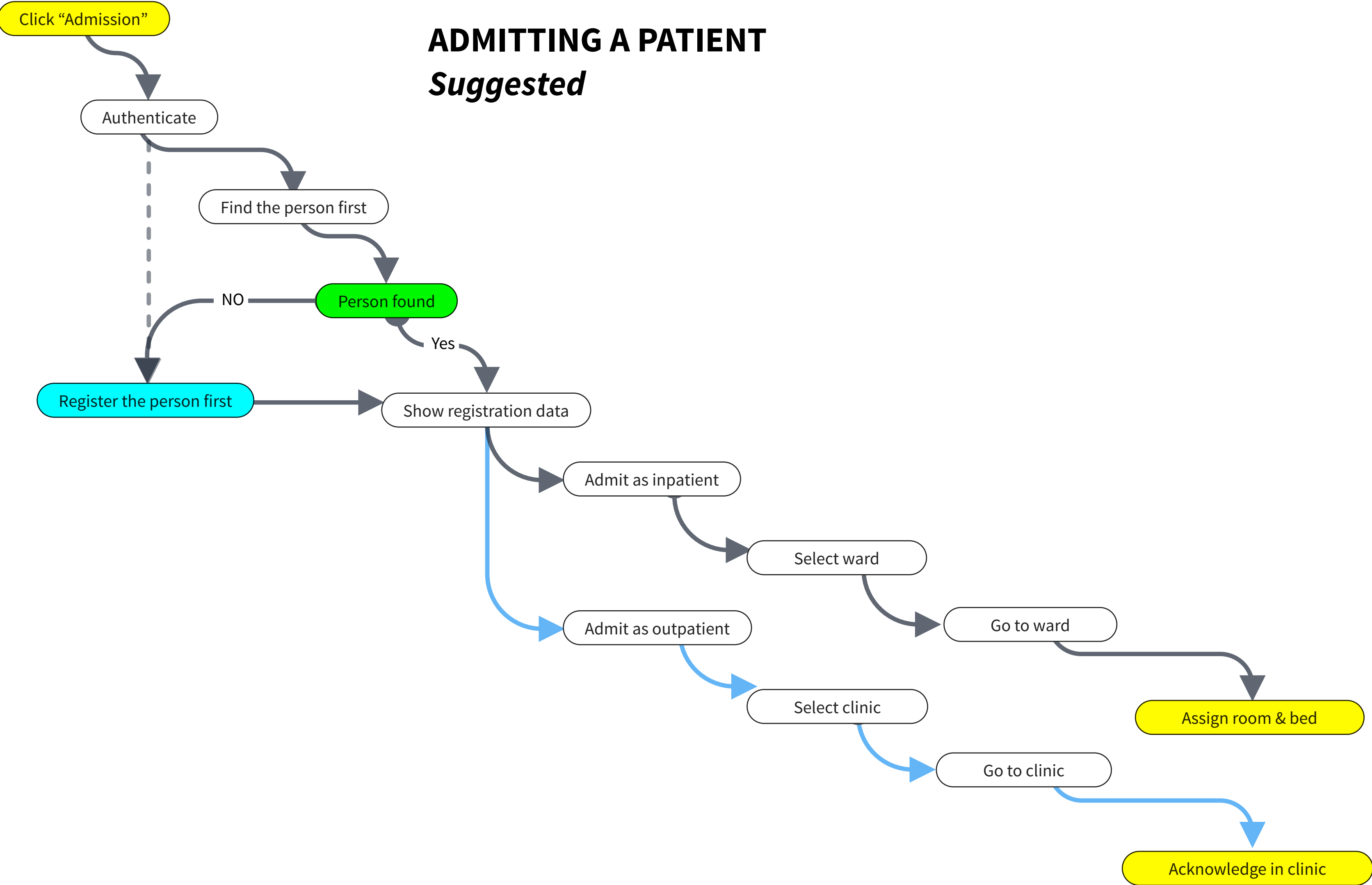


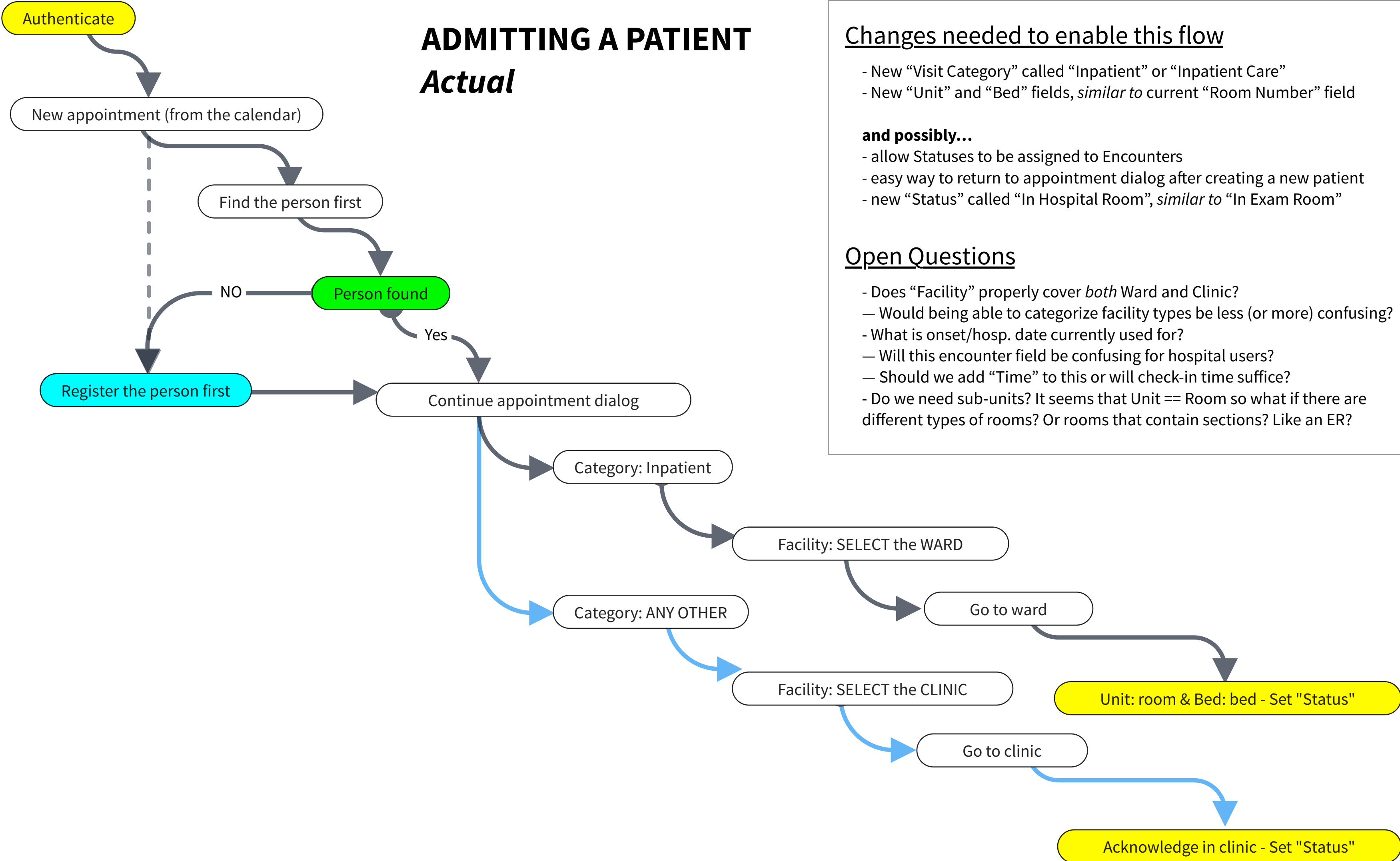
# ADMITTING A PATIENT

*Suggested*



# ADMITTING A PATIENT

## *Actual*



### Changes needed to enable this flow

- New "Visit Category" called "Inpatient" or "Inpatient Care"
- New "Unit" and "Bed" fields, *similar to* current "Room Number" field

### **and possibly...**

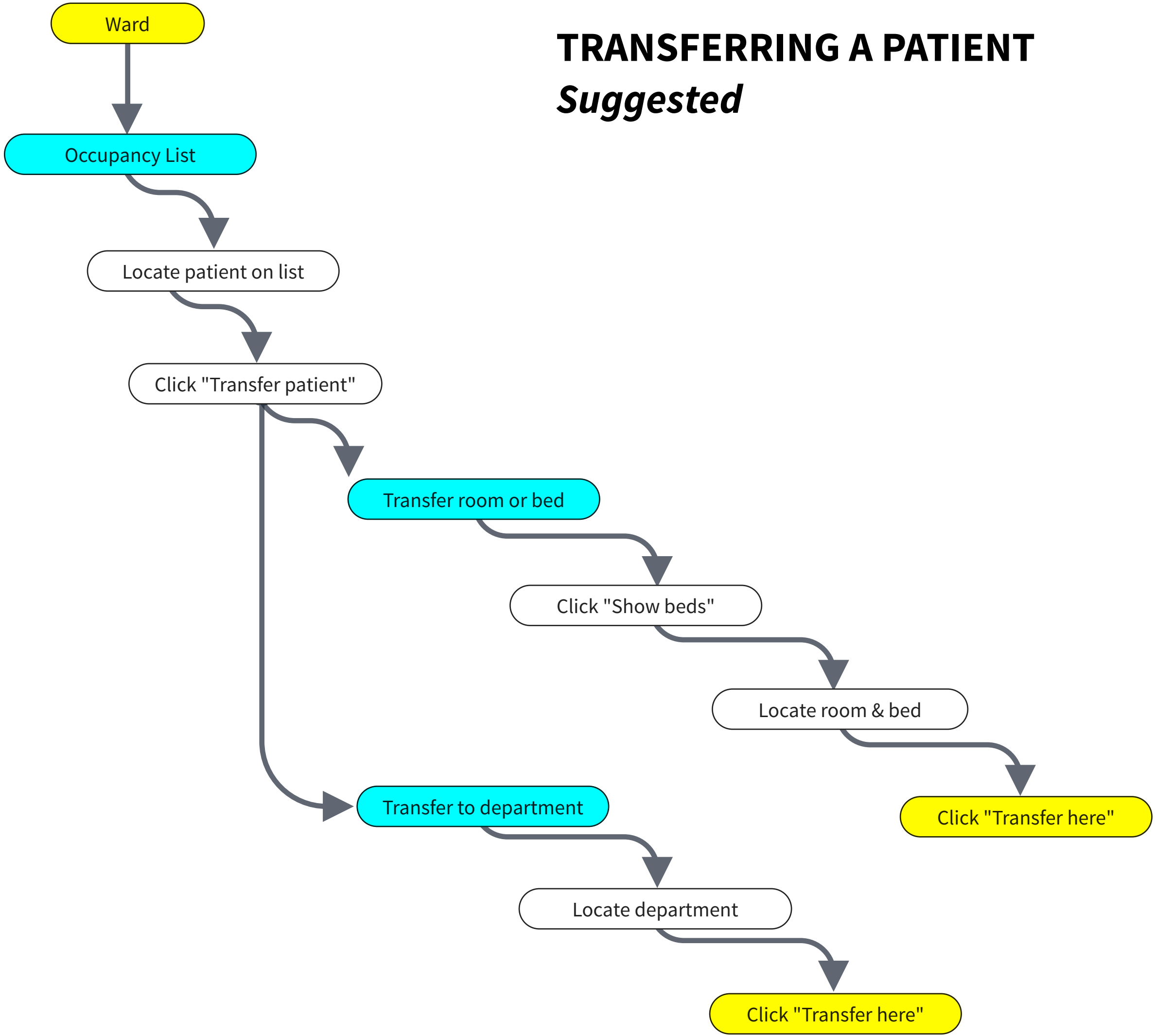
- allow Statuses to be assigned to Encounters
- easy way to return to appointment dialog after creating a new patient
- new "Status" called "In Hospital Room", *similar to* "In Exam Room"

### Open Questions

- Does "Facility" properly cover *both* Ward and Clinic?
- Would being able to categorize facility types be less (or more) confusing?
- What is onset/hosp. date currently used for?
- Will this encounter field be confusing for hospital users?
- Should we add "Time" to this or will check-in time suffice?
- Do we need sub-units? It seems that Unit == Room so what if there are different types of rooms? Or rooms that contain sections? Like an ER?

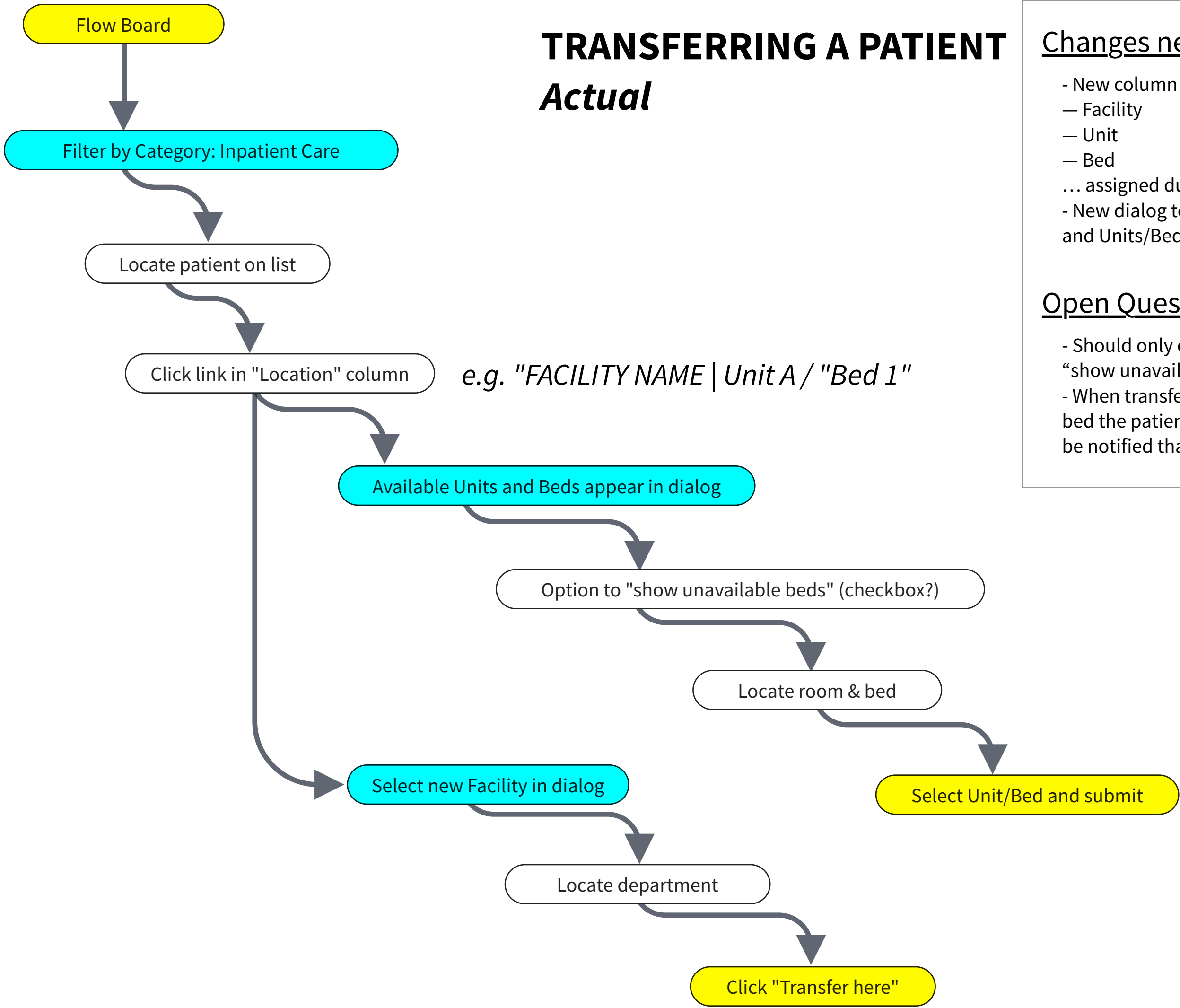
# TRANSFERRING A PATIENT

*Suggested*



# TRANSFERRING A PATIENT

## *Actual*



### Changes needed to enable this flow

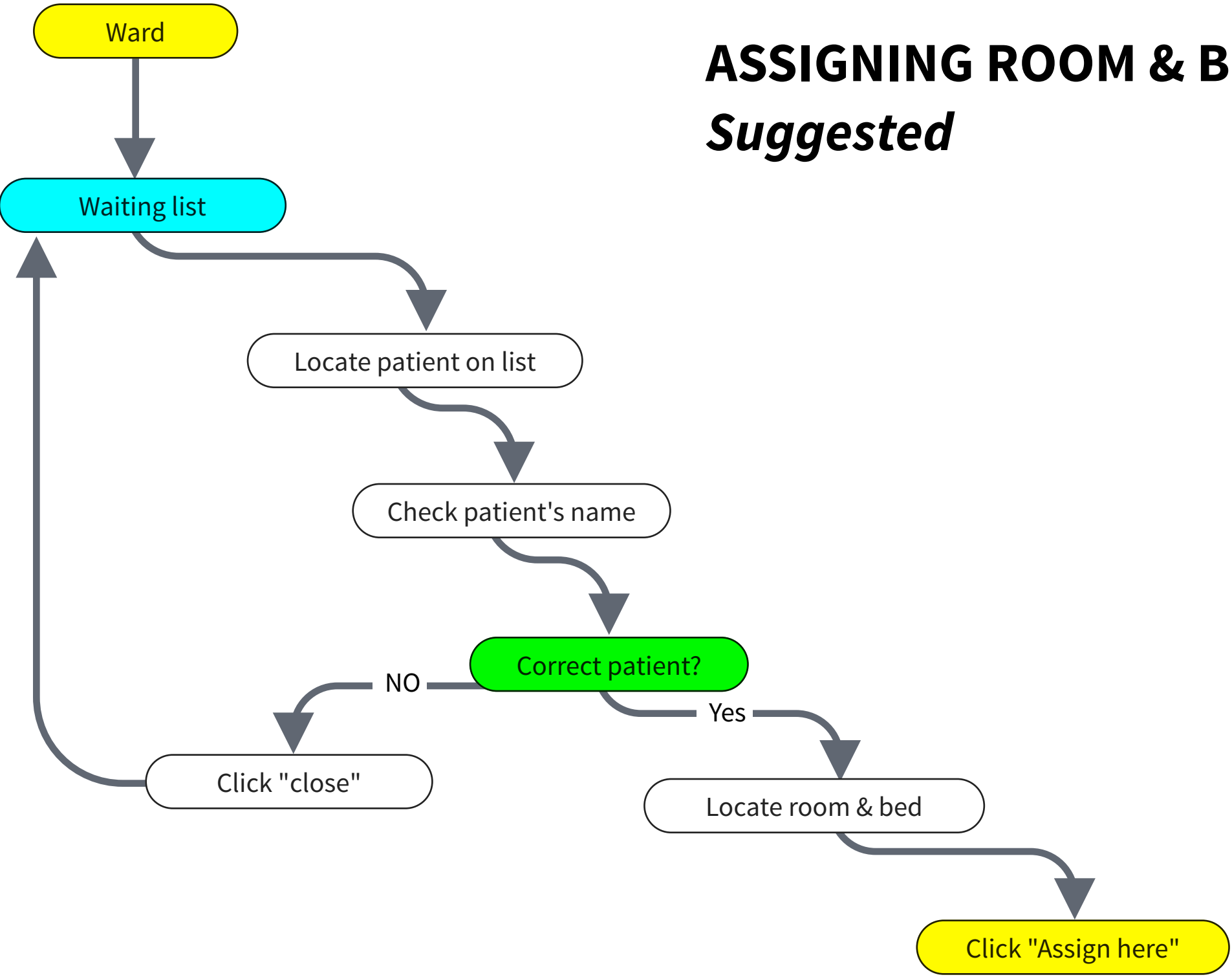
- New column in Flow Board called "Location" containing:
  - Facility
  - Unit
  - Bed
- ... assigned during Encounter
- New dialog to enable "Transferring" of patients between Facilities and Units/Beds within facilities

### Open Questions

- Should only open beds appear on the dialog? I included an option to "show unavailable beds", just in case...
- When transferring across facilities, does the transferrer know what unit & bed the patient will end up? If not, how should the person in that facility be notified that the patient needs a bed?

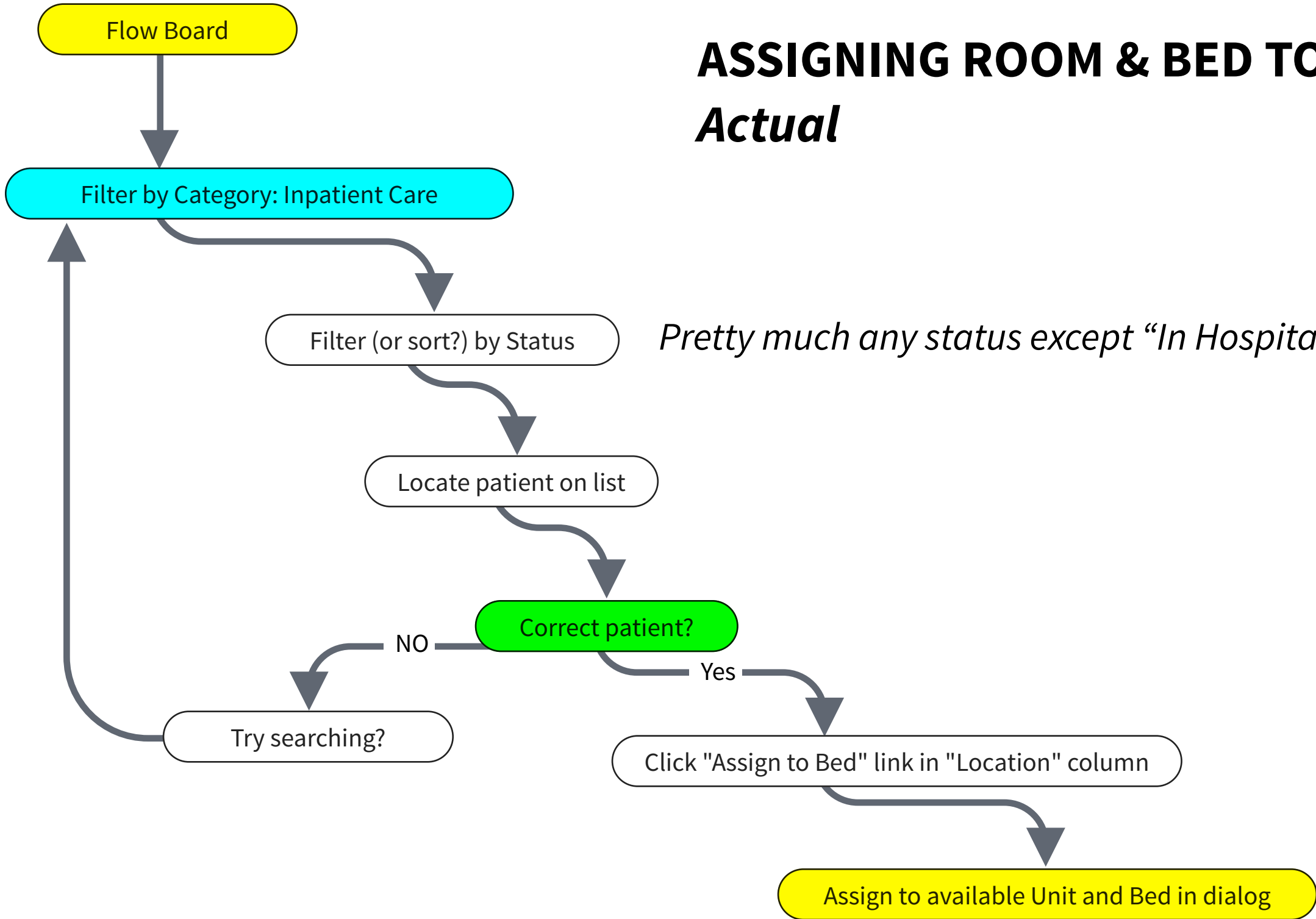
# ASSIGNING ROOM & BED TO INPATIENT

*Suggested*



# ASSIGNING ROOM & BED TO INPATIENT

## *Actual*



*Pretty much any status except "In Hospital Room"*

### Changes needed to enable this flow

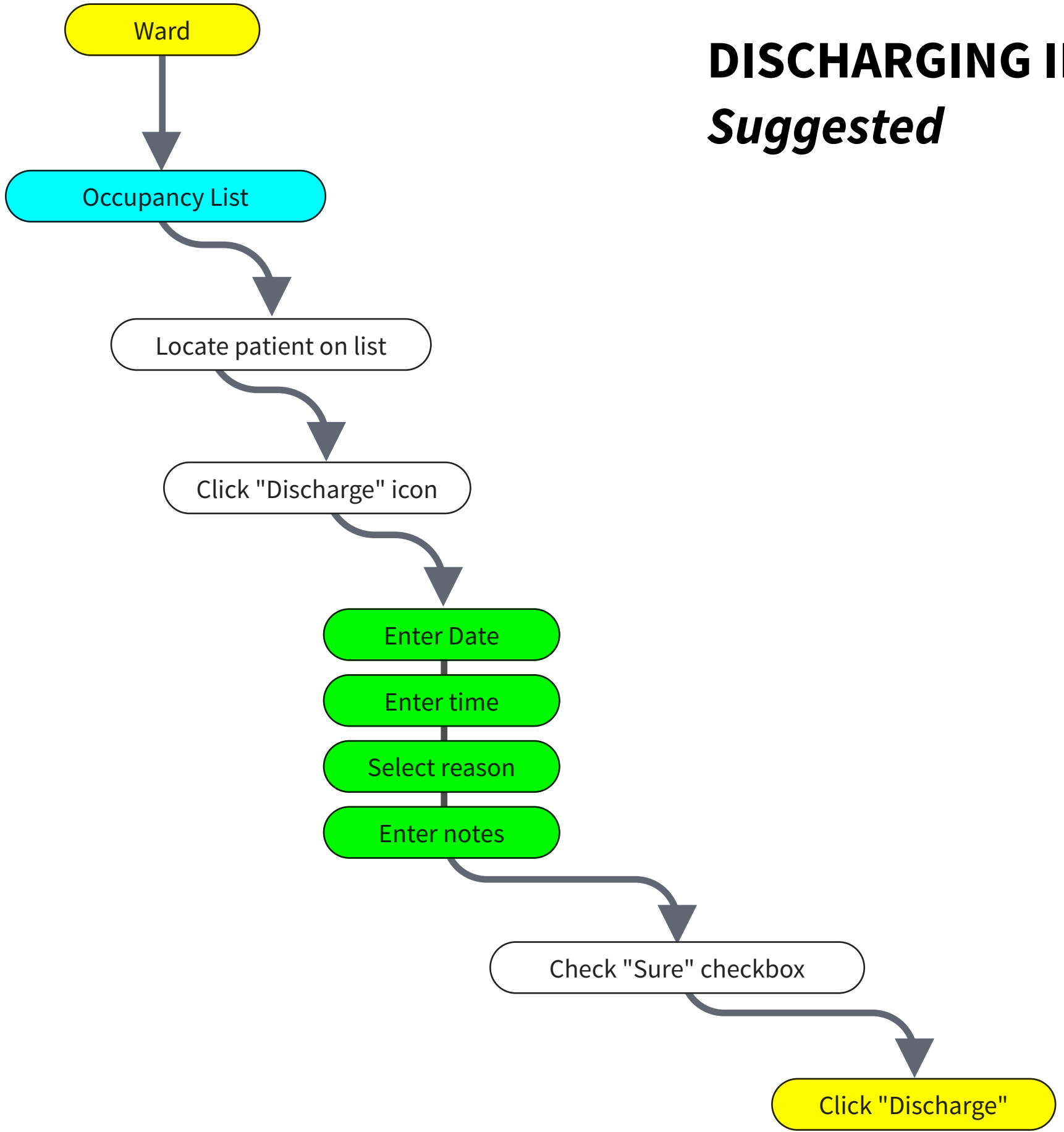
- Nothing new outside of what is noted in "Transferring a patient" flow

### Open Questions

- Should Status automatically changed to "In Hospital Room" after a patient is assigned to a bed?
- Do we need an "In Transit" status for when the person leaves the waiting room and is on their way to the bed?

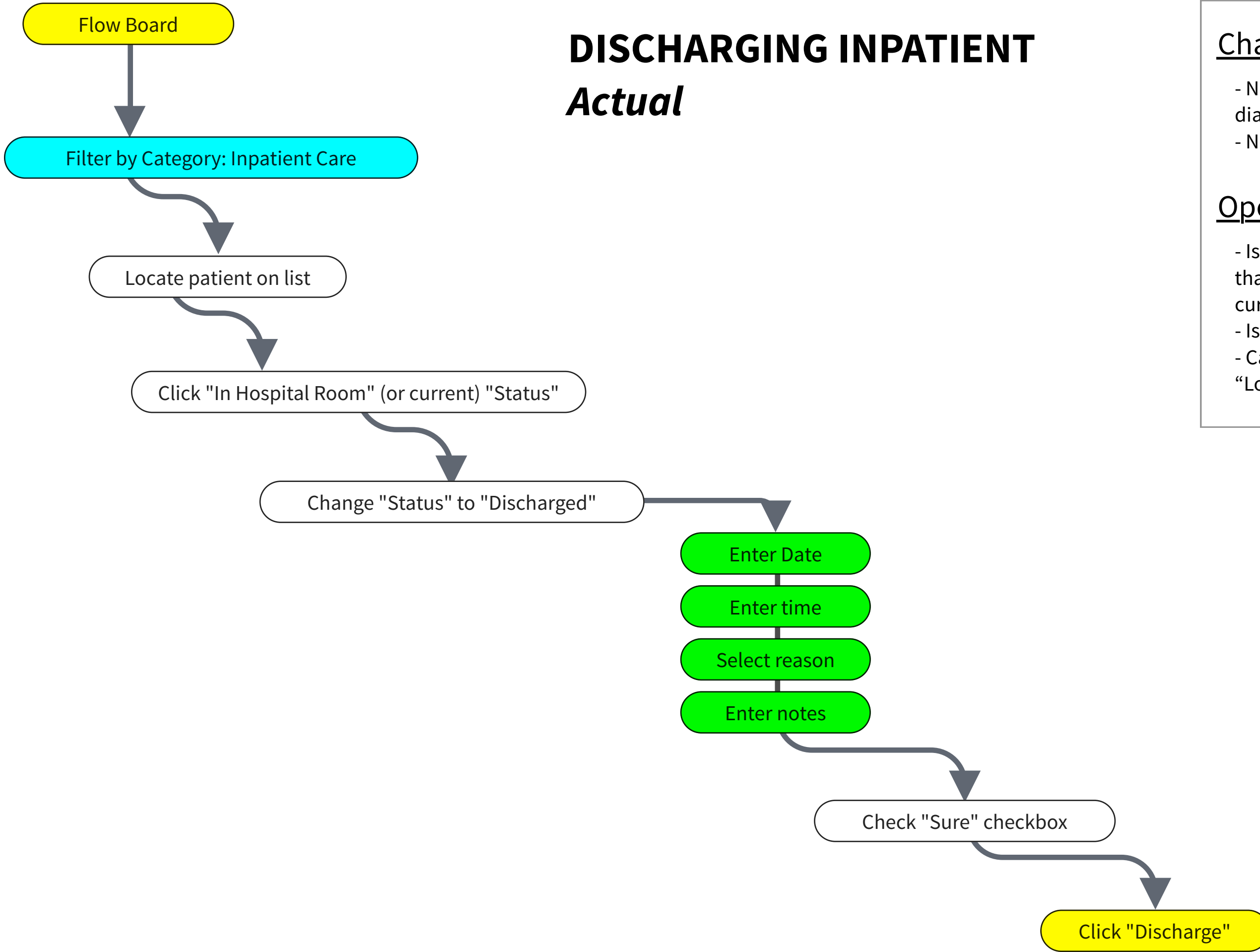
# DISCHARGING INPATIENT

*Suggested*



# DISCHARGING INPATIENT

*Actual*



## Changes needed to enable this flow

- New dialog (or modifications of the current Status dialog) for "Discharged" status
- New status "Discharged"

## Open Questions

- Is "Date" and "time" necessary? Or can we just use the time that the status changed (similar to how "Checked out" works currently)
- Is the "Sure" checkbox necessary?
- Can we use the "Status" modal for other workflows (like the "Location" one described in previous flows?)